



**INDEPENDENT**  
MECHANICAL SUPPLY INC.  
*Obsessed with Exceeding Expectations*

ETOBICOKE | OAKVILLE | SCARBOROUGH



**INDEPENDENT**  
MECHANICAL SUPPLY INC.  
*Obsessed with Exceeding Expectations*

## **Our Story**

Founded in 2008, Independent Mechanical Supply first opened its doors at the industry-known Etobicoke location in February 2009. The owners, Paul Blaik, Greg Tester, and David Walker, launched their business with two goals in mind; carry on the quality of service and knowledge from the generations before them, and bring new technology and skills into the mix to heighten how the ecosystem of plumbing and mechanical wholesale operates.

With a dedicated team of industry gems, the growth of Independent Mechanical Supply has been constant from the start. 'Heart' is at the center of drive for the contributors that have helped Independent Mechanical Supply grow to being a go-to dependable distributor in the mechanical and plumbing industry.

Today, we have a stable foundation in place and continued partnership with all touchpoints in the industry. We are expanding our experienced team with new energy and niche skillsets as we focus on key initiatives that will continue to improve how our customers do business with us. We strive to evolve 'quality service' by simplifying mechanical and plumbing wholesale; incorporating technology at the center of how we provide a better experience to our customers and our vendors.

**Obsessed with exceeding our customer's expectations**



# Plumbing



At Independent Mechanical Supply, we provide a wide range of plumbing solutions for contractors, maintenance teams, and end users across Canada. From faucets and fixtures to water heaters, drainage systems, supply lines, and repair parts, our inventory is extensive and focused on quality and availability. We stock leading brands to ensure reliable products for new installs, renovations, and repair parts.

## Faucets

Lavatory, kitchen, service, manual, metering and automatic faucets for commercial and residential applications.

## Sinks & Lavatories

Stainless steel, vitreous china, ADA, terrazzo, composite (commercial and residential) bar, utility, laundry and service basins.

## Toilets & Urinals

One-Piece, two-piece, floor mount, wall hung in various flow rates for residential and commercial applications.

## Showers & Tubs

Shower bases, bathtubs, and tub surrounds.

## Drainage & Plumbing Components

Waste & overflow, traps, tubular brass, lav drains, tub and shower drains.

## Flow Control Solutions

Backflow preventers, vacuum breakers, mixing valves, and specialty fittings.

## Rough-In Plumbing Specialties

Mixing valves, stub outs, brackets, water heater stands and pans, flanges, WC Bolts, shutoff valves, hammer arrestors, outlet boxes.

## Water Heaters

Gas, electric, heat pump operated, tank type and tankless.

## Hoses & Connectors

Flexible connectors, braided supply lines, and dishwasher hoses.

## Stops & Risers

Angle stops, straight stops, and risers for faucet/toilet installations.

## Repair Parts

Replacement Cartridges, flush valves, aerators, handles, fill valves, flappers, wax and sponge gaskets.

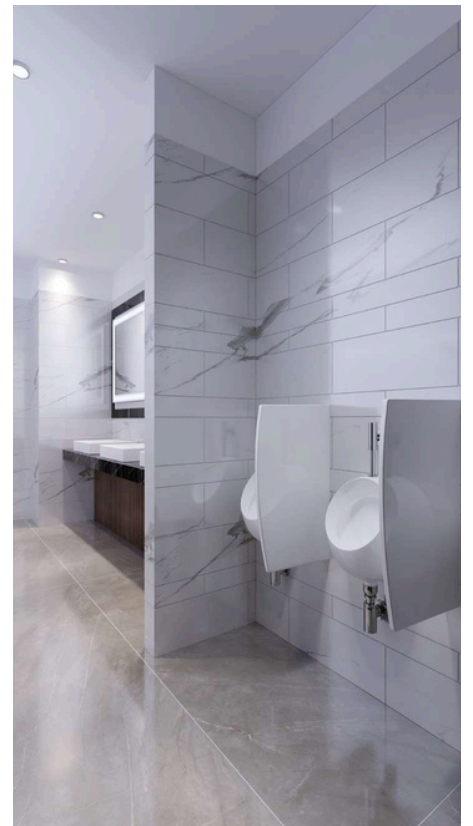
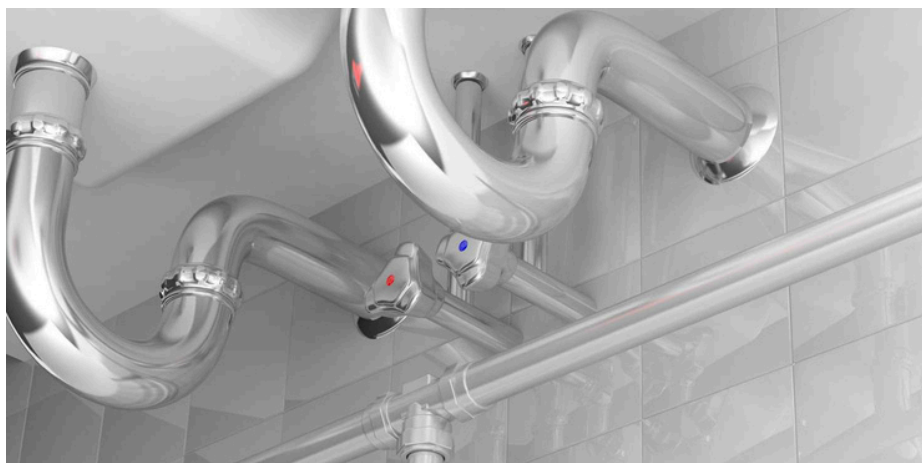
## Accessories

Diverter, spouts, trim kits, showerheads, basket strainers, stoppers, disposal flanges.

# Pumps & Accessories



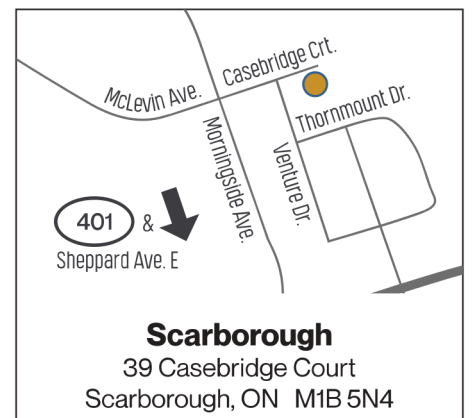
IMS supplies a full range of Pumps & Pump Accessories - including ground water, sump, sewage, effluent as well as sump pits, compression check valves and repair parts.



## Our Partners



## Locations





**INDEPENDENT**  
MECHANICAL SUPPLY INC.  
*Obsessed with Exceeding Expectations*

ETOBICOKE | OAKVILLE | SCARBOROUGH

## PVF



### Carbon Steel Pipe

Plain end, Plain end bevelled, Threaded & Coupled, Roll Grooved end types. ERW, Galvanized, Seamless for mechanical, gas, and fire protection applications.

### Copper Pipe & Tube

Type L, L medical, M, K and DWV pipe for plumbing, HVAC, and refrigeration systems.

### Plastic Pipe & Tube

ABS, BDS, Pex, Pert, PVC and CPVC piping for residential, commercial, and industrial use.

### Stainless Steel Pipe & Tube

Corrosion-resistant piping for specialized and industrial environments as well as potable water applications.

### Pipe Insulation

Thermal, fiberglass and foam insulation products to increase efficiency and reduce condensation or noise.

### Steel Fittings

Forged & welded high-pressure fittings for industrial and commercial piping systems.

### Malleable, Cast, Ductile Threaded Fittings

Threaded fittings commonly used in plumbing, heating, gas, industrial and fire protection applications.

### Copper & Brass Fittings

Sweat, press, compression, threaded and push-fit fittings for potable and hydronic systems.

Our PVF category includes an expansive selection of pipe, valves, fittings, and flanges to suit a wide range of applications—from residential and commercial plumbing to industrial and institutional builds. We carry products in copper, PVC, CPVC, ABS, PEX, stainless steel, carbon steel and cast iron to meet your specific project requirements. Whether you need ball valves, unions, threaded fittings, or no-hub couplings, we've got it covered. At Independent Mechanical Supply, we back our PVF inventory with deep product knowledge and dependable service to keep your workflow moving.

### Plastic Fittings

PVC, CPVC, PEX, ABS, HDPE, polypropylene, nylon material types and in standard connection types such as solvent weld, threaded, and push-fit fittings.

### Grooved Fittings & Couplings

Grooved elbows, tees, reducers, and flexible/rigid couplings for mechanical and fire systems.

### Flanges

Slip-on, weld-neck, raised-faced and blind - in carbon and cast iron.

### Gaskets

Soft rubbers and fibers, PTFE, graphite, and metals, and composites such as Spiral-Wound and Kammprofile.

### Strainers

Y-strainers and basket strainers for protecting valves and equipment from debris.

### Expansion Joints & Flex Connectors

Absorb thermal movement and vibration in piping systems.

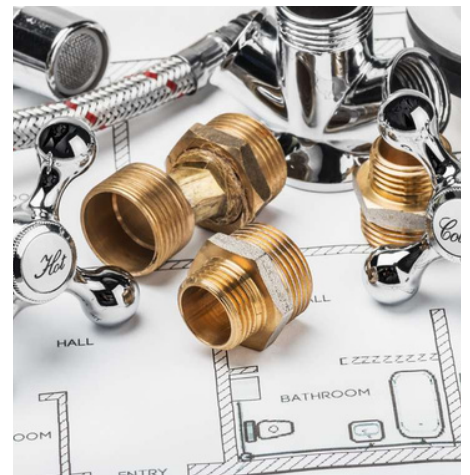
### Cast Iron Soil Pipe Fittings & Couplings

Cast iron soil pipe and fittings are durable, fire-resistant, and sound-dampening, ideal for DWV systems in high-rise and commercial buildings.

They offer superior strength and longevity, connecting via hub-and-spigot or hub-less methods with gaskets and clamps.

### Valves

- **Ball Valves** – For reliable on/off control in a variety of systems.
- **Gate Valves** – Traditional shut-off control for water and gas.
- **Globe Valves** – Throttling flow control.
- **Check Valves** – Prevents backflow in plumbing and mechanical systems.
- **Butterfly Valves** – Space-saving solution for flow regulation.
- **Pressure-Reducing & Relief Valves** – Control system pressures for safety and efficiency.

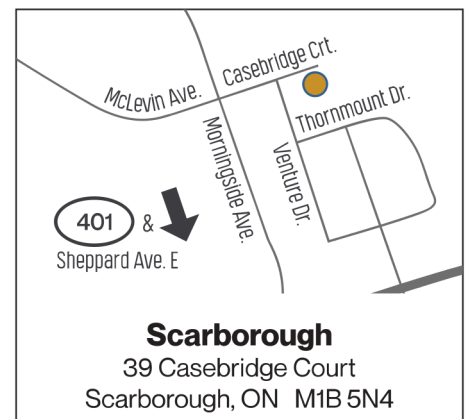




## Our Partners



## Locations





**INDEPENDENT**  
MECHANICAL SUPPLY INC.  
*Obsessed with Exceeding Expectations*

ETOBICOKE | OAKVILLE | SCARBOROUGH

## Hydronics



### Boilers

High-efficiency condensing boilers for residential, commercial, and industrial heating systems.

### Boiler Accessories

Boiler feed, relief valve, low water cut-offs to support boiler operations.

### Pumps & Pumping Systems

Circulator pumps, zone pumps, and pump flanges for hydronic heating loops and domestic hot water recirculation.

### Heat Exchangers

Brazed plate models for hydronic heating, snow melt, and domestic water preheating.

### Radiant Heating

PEX tubing, manifolds, controls, and accessories for in-floor heating applications.

### Radiators & Convectors

Panel radiators, baseboard heaters, and unit heaters for hydronic space heating.

### Hydronic Zone Controls

Zone valves, actuators, and zone control panels to manage multi-zone heating systems.

### Mixing Valves & Temperature Controls

Thermostatic mixing valves and electronic temperature control valves for domestic hot water and radiant systems.

### Air Elimination & Dirt Separation

IMS is your trusted partner in hydronic heating systems for residential, commercial, and industrial applications. With full support across all of our branch locations, we offer a comprehensive range of high-performance products including boilers, pumps, expansion tanks, radiant heating supplies, snow melt systems, and control solutions to maximize energy efficiency.

Whether you're working on a retrofit, new construction, or a specialized bid/spec project, our team has the expertise and inventory to support your goals—complete with layout and design capabilities to simplify planning. Our access to industry-leading manufacturers ensures that you receive dependable, code-compliant solutions backed by exceptional service.

As this sector continues to evolve, IMS remains committed to offering the latest in high-efficiency technology and ongoing product training. We believe in investing in the right tools for the right hydronic heating application—ensuring that your systems perform reliably for years to come.

For sales contact our team via [hss@imechsupply.com](mailto:hss@imechsupply.com) and for technical support, please contact our team at [tss@imechsupply.com](mailto:tss@imechsupply.com).

Air vents, air separators, and combo dirt/air separators to optimize system performance and reduce maintenance.

### Expansion Tanks

Pre-pressurized tanks for closed-loop hydronic systems to maintain system pressure and protect components.

### Snow Melt Systems

Tubing, manifolds, and control systems designed to prevent snow and ice buildup on driveways, walkways, and ramps.

### Glycol & System Accessories

Inhibited Propylene Glycol, fill units, feeders and accessories for reliable freeze protection and fluid management.



## Steam



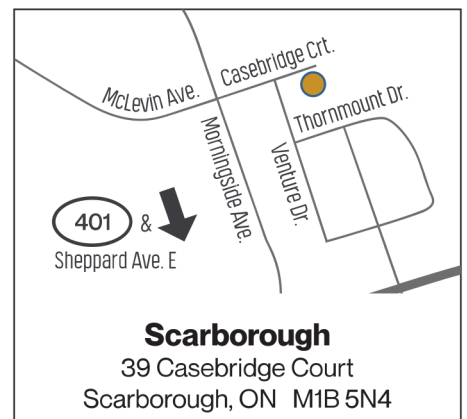
IMS supplies a full range of steam-system components—such as steam traps, regulators, vents, and condensate fittings—designed to deliver reliable performance and system efficiency in commercial and industrial applications.



## Our Partners



## Locations





**INDEPENDENT**  
MECHANICAL SUPPLY INC.  
*Obsessed with Exceeding Expectations*

ETOBICOKE | OAKVILLE | SCARBOROUGH

## Account Benefits



### Take control of your shopping experience!

Once you've registered your IMS account online, you'll unlock a full suite of e-commerce tools designed to simplify your workflow. With online ordering at **www.imechsupply.com**, you can access your custom account pricing, check real-time stock levels across all IMS branches, print or email your invoices, check the status of your existing orders, convert Quickbids to orders, and place an online order anytime, from anywhere.



#### Unique Account Pricing

See your personalized pricing every time you log in—tailored to your account and purchasing history.



#### Product Availability

Check real-time stock levels across all IMS branch locations.



#### Convert Quickbid to Order

Easily review and submit your saved Quickbids as orders when you're ready to buy.



#### Print & Email Invoices

Download or email your invoices anytime with our quick self-serve tools.



#### View Order Status

Track your orders from picking to delivery, all in one convenient place.



#### Punchout

Access our product catalogue and place orders through Level 1 and 2 Punchout connections directly from your procurement system.



#### My Saved Cart

Save, label, and share carts with your team for organized, efficient ordering.



#### My Product Groups

Create and manage custom product groups to simplify reorders and multi-project management.



#### HVAC Parts Finder Tool

Quickly find compatible HVAC parts across multiple brands using our cross-referencing tool—available when logged into your online account.



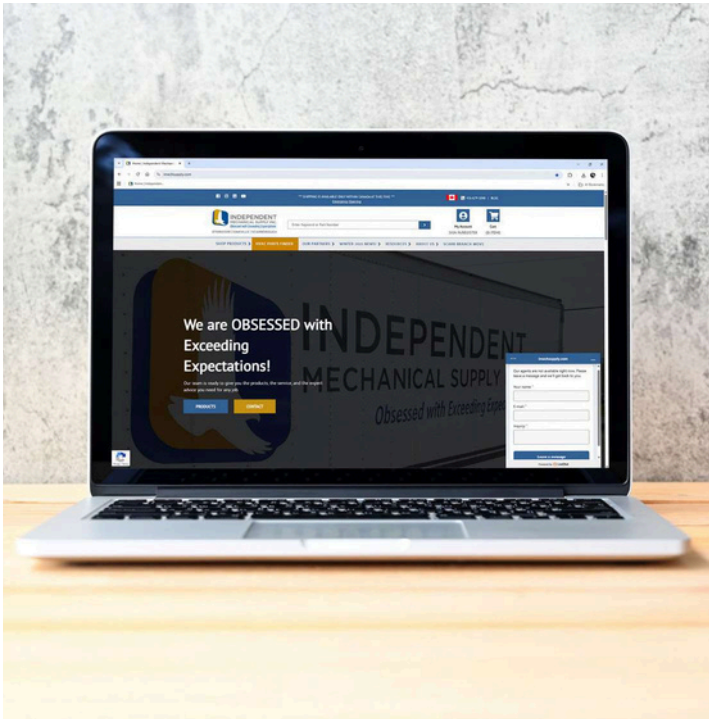
#### Customer Product Number

Add your own custom part numbers or labels to items for faster searches and easier order tracking.



#### Secure Checkout

Shop with confidence—IMS uses advanced encryption technology to keep your information safe and secure.





# Online Features

## Find what you're looking for faster!

At IMS, we've built our online platform to make your job easier. Visit [www.imechsupply.com](http://www.imechsupply.com) to browse over 100,000 products across plumbing, PVF, hydronics, HVAC, and tools categories—all backed by the reliable brands and service you trust. Our website offers advanced search tools (like HVAC Parts Finder), stocked items toggle and specific attribute filter options, detailed product specs, and specially designed pages for our top manufacturer partners categorizing their product in sub-category groupings. All designed to help you find what you need quickly and confidently. If you aren't able to find what you're looking for, our LiveChat connects you with an IMS employee during IMS hours of operation, to answer your questions.



### Stocked Items Toggle

Filter search results to show only regularly stocked products and check real-time availability.



### Filters

Narrow your search by brand, manufacturer, category, or product details like material, size, or colour.



### Our Partners

Browse specific Brand pages with product line category tiles to help you find the product you're looking for faster.



### Complementary Products

When viewing a product, you can view additional related products and add them to your shopping cart without navigating away from your main search page.



### Our Featured Products

Find the latest products here on our home page, updated every month.



### News & Announcements

Catch up on the latest IMS updates, product launches, and company news from the News section in our top menu.



### Events & Promotions

Explore current and upcoming contests, events, and promotions—or browse past highlights in our event archive.



### LiveChat

Chat directly with an IMS team member during business hours using the LiveChat widget on any page.



### About Us

Learn more about IMS through the About Us dropdown, where you'll find contact info, account setup, career opportunities, and holiday hours.



### Additional Resources

Find company policies, terms, services, forms, feedback links, and social media connections in the footer of our website.



GENERAL FEEDBACK



PRODUCT FEEDBACK



**INDEPENDENT**  
MECHANICAL SUPPLY INC.  
*Obsessed with Exceeding Expectations*

ETOBICOKE | OAKVILLE | SCARBOROUGH

## Services & Resources



### Customer Service

Available by phone, email, online Live chat, or in person at our counters, they assist with product selection, quotes, orders, and general inquiries. Working closely with our branches and vendors, they deliver fast, accurate support. Customer Service specializes in Plumbing, PVF, Heating & Hydronics, Tools, and HVAC solutions.

**Plumbing, PVF, Tools Support:** [oqr@imechsupply.com](mailto:oqr@imechsupply.com)

**Heating Sales & Support:** [hss@imechsupply.com](mailto:hss@imechsupply.com)

**HVAC Support:** [HVAC@imechsupply.com](mailto:HVAC@imechsupply.com)

### Bid/Spec Project Team

Our Quotations Team reviews your bid/spec and large-scale project requirements and provide fast accurate pricing, source competitive options, and prepare detailed quotes to build a winning submission. If we're collectively successful in being awarded the project, a dedicated project manager will work with you through every step of the project to ensure material arrives when needed. [pqr@imechsupply.com](mailto:pqr@imechsupply.com)

### Branch Counter Team

The IMS Counter Team offers quick, knowledgeable service for walk-in orders, pickups, and product questions. They provide same-day assistance and ensure you get the right materials, right when you need them. [oqr@imechsupply.com](mailto:oqr@imechsupply.com)

### Technical Sales & Support Team

Our Technical Sales Support team offers expert help with system design, troubleshooting, product selection, and project planning. They provide practical, project-ready solutions to keep your installations running smoothly.

**tss@imechsupply.com**

### Outside Sales Team

Our Outside Sales team supports you on the job site, in your shop, or wherever your project takes you. They provide product guidance, project support, and ongoing account management to ensure you always have what you need to keep work moving. [osr@imechsupply.com](mailto:osr@imechsupply.com)

### Agency & Master Distributor Partnerships





## Order your way with IMS

Visit us in-branch, call, email, or shop anytime through your online account.

**Phone:** 416-679-1048

**Email:** oqr@imechsupply.com

**Online:** www.imechsupply.com

**In-Branch Pickup** We have 3 branches you can stop in at to pickup product.



## Delivery Services

IMS offers prepaid delivery across the GTA, covering south to Niagara Falls, north to Barrie, west to London, and east to Cobourg. Our GPS-tracked, large delivery fleet means our shipping department knows where your delivery is and if you choose to, you can receive text updates directly.

For orders outside this area in Canada or the USA, we can arrange prepaid courier service, or you can request shipping quote from our Customer Service team at [oqr@imechsupply.com](mailto:oqr@imechsupply.com).

## Boom Truck Delivery

IMS provides Boom Truck Delivery across the GTA and surrounding areas. Our trucks safely lift and place materials—up to 48 ft high or 50 ft out—making it easy to handle heavy or oversized products on demanding job sites.

## Pipe Fabrication

IMS offers in-house pipe fabrication, including cutting or grooving up to 8" and threading up to 4". This service reduces job-site prep and keeps installations moving efficiently.

## Mill Test Reports

Access Mill Test Reports for steel pipe, forged fittings, and weld fittings anytime through our website. Retrieve certifications quickly for quality assurance, traceability, and compliance.

## Opening A New Account

Open an IMS account by completing our online application form at [imechsupply.com](http://imechsupply.com).

Once submitted, our team reviews and approves new credit account requests - typically within 3 business days. An active account allows you to access customized pricing, online ordering, and additional IMS services.

## Digital Services

IMS provides comprehensive reporting tools such as Spend Reports, Backorder Reports, automated Proof-of-Delivery (POD) notifications, and Shipping Manifest Reports that summarize all deliveries scheduled for the next morning.

## Tool Rental & Tank Exchanges

IMS provides convenient tool rental and industrial gas exchange services to keep your projects running smoothly. Rent essential tools like press tools and PEX expansion (Uponor) for short-term needs or to maintain on-site efficiency. We also offer reliable acetylene, oxygen and other industrial gas supply and cylinder exchange services, including job-site delivery, ensuring your operations stay safe, compliant and fully stocked.



## Operating Hours

Monday to Friday: 6:30 AM – 6:00 PM, Saturday: 7:30 AM – 12:00 PM\*

\*Please note: We are closed on Saturdays of long weekends; however,

**Emergency Hours:** Call **416-679-1048**, select emergency option to reach our on-call team for assistance when branches are closed.



**INDEPENDENT**  
MECHANICAL SUPPLY INC.  
*Obsessed with Exceeding Expectations*

ETOBICOKE | OAKVILLE | SCARBOROUGH

## HVAC



### Ductless Split Systems

Energy-efficient heating and cooling systems ideal for zone control in residential and commercial spaces.

### Heat Pumps

Versatile systems offering both heating and cooling, designed for optimal year-round indoor comfort.

### Air Handlers & Coils

Components that work with heat pumps or AC units to circulate and condition air efficiently.

### Furnaces & Unit Heaters

High-performance solutions for space heating in residential, commercial, and industrial settings.

### Ventilation Fans & HRVs/ERVs

Balanced ventilation systems that improve indoor air quality and control humidity.

### Thermostats & Controls

Smart and programmable devices for precise HVAC system management and energy savings.

### HVAC Accessories & Installation Supplies

From brackets to wall mounts and fasteners—everything needed for seamless installs.

### Refrigerant & Charging Tools

Trusted products for charging, recovering, and managing refrigerants in HVAC systems.

### Mini-Split Line Sets & Fittings

Pre-insulated, easy-to-install piping systems designed for ductless unit connections.

From heating and cooling to indoor air quality, our HVAC selection includes everything you need to deliver efficient, reliable comfort. We stock ductless mini-splits, gas and electric unit heaters, thermostats, humidifiers, refrigerants, and ventilation components—all backed by some of the most respected names in the industry. Brands we carry include AllTemp, Comfort-Aire, Easy Radiant, Viper, and Yellow Jacket Tools. Whether you're servicing a residential unit or specifying a commercial HVAC system, Independent Mechanical Supply provides the solutions, stock, and expertise to support every step of the project.

### Condensate Management

Pumps, traps, and pans to handle drainage and prevent moisture damage in HVAC systems.

### Air Quality

#### (Filters, Humidifiers, UV Purifiers)

Enhance air purity and comfort with filtration, humidity control, and sterilization solutions.

### Roof Curbs & Mounting Brackets

Support systems and accessories for safe, secure rooftop and wall-mounted HVAC installations.

### Flue & Venting Components

Reliable venting solutions for safe exhaust and airflow in residential and commercial systems.





# Electrical



IMS stocks a variety of core electrical installation support products. From essentials to disconnects and wire – helping to be a one stop shop for our customers.

## Our Partners



# Refrigerant



Explore IMS's refrigerant products, including specialty tubing and cooling system components built for performance and durability in HVAC and industrial applications.

## Locations






## Tools



Equip your crew with high-performance tools that stand up to the rigors of the job site. We offer an extensive selection of hand tools, power tools, pipe threading machines, and specialty equipment tailored for plumbing, mechanical and HVAC professionals. Our shelves are stocked with trusted brands like Milwaukee, Ridgid, Dewalt, General Pipe Cleaners, Yellow Jacket, and TPI—tools known for durability, innovation, and professional-grade performance. Whether you're outfitting a new van or upgrading your go-to gear, Independent Mechanical Supply has the tools to keep your team productive and safe.

### Power Tools

Drills, impact drivers, saws, grinders, and cordless tool systems designed for professional-grade use on plumbing and heating job sites.

### Hand Tools

Wrenches, pliers, pipe cutters, levels, and screwdrivers built for durability and precision.

### Pipe Fabrication

Cutting, threading, grooving, bending, and deburring tools for copper, steel, and plastic piping.

### Press Tools

Battery-powered press tools and jaws for secure and efficient pipe connections.

### Inspection & Diagnostic Tools

Cameras, scopes, and diagnostic testers for plumbing, HVAC, thermometers, and gas systems.

### Measurement & Layout

Tape measures, laser levels, paint markers, inkzall, and soapstone.

### Drain Cleaning

Drain augers, plungers, sectionals, drum machines and accessories.

### Tool Storage & Organization

Toolboxes, bags, organizers, and storage solutions for the shop or jobsite.

### Soldering & Brazing Tools

Torches, solder kits, tanks, and brazing accessories for pipe joining and repair.

### Cutting Tools

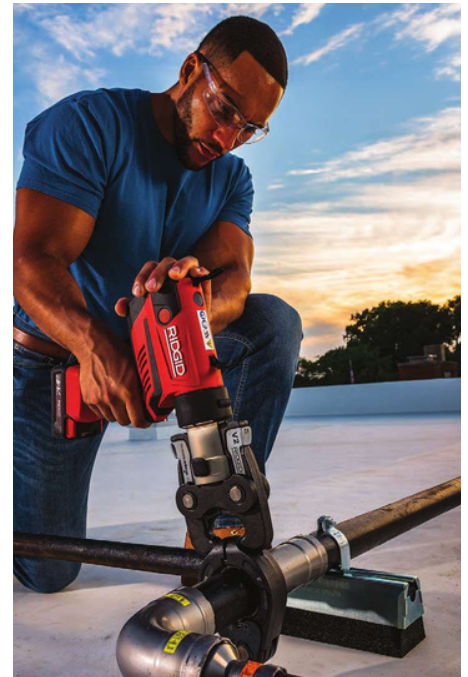
Hole saws, tubing cutters, reciprocating saw blades, and shears for various materials.

### Worksite Safety & PPE

Gloves, eyewear, knee pads, and safety accessories to meet workplace safety requirements.

### Test Equipment

Pressure test kits, gas leak detectors, multimeters, and manometers.





**INDEPENDENT**  
MECHANICAL SUPPLY INC.  
*Obsessed with Exceeding Expectations*

ETOBICOKE | OAKVILLE | SCARBOROUGH

## Drainage



From floor drains and roof drains to cleanouts, grates, and accessories, IMS offers a comprehensive drainage portfolio to meet every drainage requirement. Whether you're working on a bathroom remodel, a commercial building, or site drainage systems, our product depth and technical expertise let you specify with confidence. With full support across branches and a commitment to keeping up with code changes and product innovations, IMS is your dependable partner for drainage systems.

### Residential Drain Products

Floor Drains, Shower Drains.

### Trap Priming & Protection

Trap Seals, Trap Primers, Dilution Traps.

### Commercial Drainage

Floor Drains, Roof Drains, Trench & Channel Drains, Floor Sinks.

### Access & Maintenance

Cleanouts, Cleanout Covers, Cleanout Adapters, Drain Adapters, Test Caps, Access Panels.

### Interceptors & Basins

Grease Interceptors, Oil Interceptors, Sump and Sewage Basins, and Hair Interceptors.

### Structural Support

Carriers, Fixture Supports.

### Flow Control

Backwater Valves.

### Drain Accessories

Drain Covers, Grates, Strainers.

### Acid Waste & Drainage

Polypropylene and Polyethylene Pipe & Fittings, Fusion-Weld Fittings, Borosilicate Glass Pipe & Fittings.

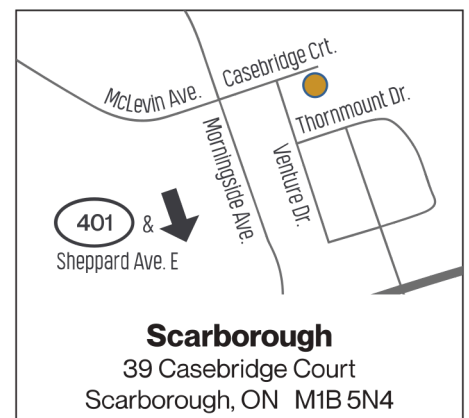




## Our Partners



## Locations





**INDEPENDENT**  
MECHANICAL SUPPLY INC.  
*Obsessed with Exceeding Expectations*

ETOBICOKE | OAKVILLE | SCARBOROUGH

## General Construction



### Safety Products

Personal protective equipment (PPE) like helmets, gloves, eyewear, and hearing protection, designed to safeguard workers from potential hazards in construction environments.

### Sealants

High-performance sealing solutions including silicone, caulking, and spray foam designed to provide durable protection against air, moisture, and environmental elements in construction applications.

### Paint

Interior and exterior paints, marking paints, spray paints, primers, and protective coatings designed to deliver durability, coverage, and aesthetic appeal for a wide range of construction applications.

### Fire Stopping

Fire-rated materials and safety products including firestop sealants, fireproof coatings, and accessories designed to meet building code requirements and enhance fire resistance.

The Construction category at IMS encompasses a wide range of products essential for various construction projects. From foundational materials to finishing touches, IMS provides solutions that meet the diverse needs of contractors and builders. The product offerings are sourced from reputable manufacturers, ensuring durability and performance. IMS's commitment to customer satisfaction is evident through their extensive inventory and expert support, making them a trusted partner in the construction industry.

### Plywood

Carrying 5/8" Plywood to support install of Tankless Water Heaters, Manifolds and in-floor heating applications.

### Cement & Concrete

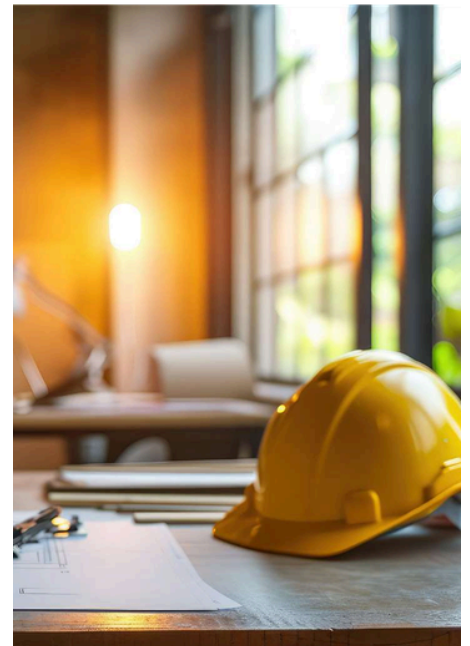
Construction-grade cement, concrete mixes, and related products for foundations, structural work, and repair applications.

### Electrical Supplies

Electrical supplies and components such as wiring, connectors, boxes, and accessories for safe and efficient power distribution in construction projects.

### Adhesives & Tapes

High-strength bonding and fastening solutions including PL Premium adhesives, duct tape, insulation tape, electrical tape, and specialty tapes for various construction applications.





## Our Partners



## Locations





**INDEPENDENT**  
MECHANICAL SUPPLY INC.  
*Obsessed with Exceeding Expectations*

ETOBICOKE | OAKVILLE | SCARBOROUGH

## Fasteners & Hangers



### Bolts, Nuts & Washers

Standard and specialty fasteners for structural, mechanical, and mounting applications.

### Threaded Rod

Threaded rods and studs in various lengths and grades provide strong, adjustable support for custom assemblies and hanging applications in plumbing, HVAC, and electrical installations.

### Anchors & Inserts

Mechanical anchors for securing hardware into concrete, masonry, or drywall.

### Screws (Machine, Self-Tapping, Sheet Metal)

Versatile screw types for metal, wood, sheet, and panel fastening.

### Locking Devices & Locknuts

Components like nyloc nuts, jam nuts, and locking washers to prevent loosening under vibration.

Whether you need screws, bolts, anchors, or specialty hardware, IMS is your dependable source. Our fasteners and hardware offerings cover critical mechanical applications—from securing pipe support systems to mounting equipment. With quality stock, knowledgeable staff, and reliable distribution from all our branches, we deliver the right components to get your jobs done right.

### Cable & Wire Hardware

Clamps, clips, ties, and brackets for managing cables and wiring runs.



### Pipe Support Hardware

Hangers, clamps, saddles, and brackets for properly supporting pipe systems.



### Fastener Accessories

Thread lockers, washers, spacers, and backup plates to complement core fastening systems.



### Strut & Accessories

Durable strut channels and hardware designed to provide secure, customizable support for electrical, mechanical, and plumbing installations.





## Our Partners



## Locations

**Etobicoke**  
310 Carlingview Drive  
Toronto, ON M9W 5G1

**Oakville**  
2190 Winston Park Drive  
Oakville, ON L6H 5W1

**Scarborough**  
39 Casebridge Court  
Scarborough, ON M1B 5N4



**INDEPENDENT**  
MECHANICAL SUPPLY INC.  
*Obsessed with Exceeding Expectations*

## What We Do

Every year, Independent Mechanical Supply serves over 800 businesses across the Greater Toronto Area as a comprehensive distributor of Plumbing, Hydronics, HVAC, and PVF materials, as well as related product support.

Our commitment lies in delivering personalized, prompt, and attentive service through our team of experienced industry professionals.

Independent Mechanical Supply provides a wide range of cost-effective, high-quality products spanning over 400 product lines, all while upholding the service standards contractors rely on from an independent distributor.

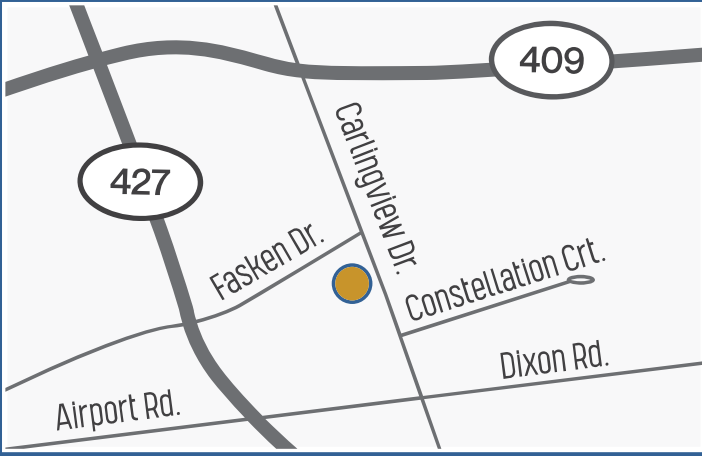
## Our Team

At Independent Mechanical Supply we are focused on a healthy mix of industry tenured employees to meet the knowledge base required by our customers, and constantly sourcing new talent from outside the industry to challenge the status quo.

We understand the value in team;

- working together as a team to bring new innovations from cross-industry best practices,
- as well as having dedicated people focused on finding new ways to make processes more efficient and continue to bring more value to our customers.

**Our goal is to stretch the boundaries of conventional wholesale!**



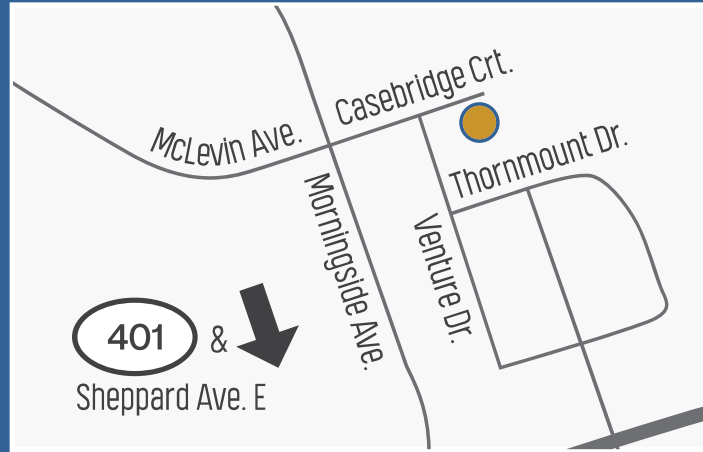
**Etobicoke**

310 Carlingview Drive  
Toronto, ON M9W 5G1



**Oakville**

2190 Winston Park Drive  
Oakville, ON L6H 5W1



**Scarborough**

39 Casebridge Court  
Scarborough, ON M1B 5N4



**INDEPENDENT**  
MECHANICAL SUPPLY INC.  
*Obsessed with Exceeding Expectations*

ETOBICOKE | OAKVILLE | SCARBOROUGH



[imechsupply.com](http://imechsupply.com)

**Toll Free:** 1-844-440-1048 | **Phone:** 416-679-1048 | **Text Your Order:** 416-679-1048

[info@imechsupply.com](mailto:info@imechsupply.com)